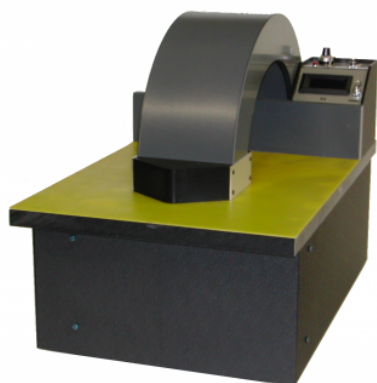


TPF

CLAMP AND FLUXMETER TEST BENCH



DESCRIPTION

This equipment is used to check the operational status of the "ammeter clamp & fluxmeter" assembly and of the fluxmeter alone

FEATURES

INPUT 1 - current

- Simulation range : from 1KA to 25KA
- Simulation range : from 3KA to 4KA

OTHER FEATURES

- Measurement reading : on a 370mm torus, section 120x60mm.

Test current : adjustable by potentiometer, activation by push button, 60sec time delayed action

POWER SUPPLY

- 115VAC / 230VAC - 60Hz

ACCURACY

- > 0,5%

CASING

- Plastic casing.

Fluxmeter junction by adaptor wire relative to the fluxmeter to test.

DISPLAY

- 3 1/2 digits LEDs 7 segments, height 14mm

PRICE On quote only

WEB LINK [Click here](#)

SECTOR

USAGE

WEIGHT 30 kilogramme

LENGTH 330 mm

WIDTH 400 mm

HEIGHT 520 mm

CUSTOMS CODE 90 30 33 70

C. OF ORIGIN France

GUARANTEE 1 year

CERTIFICATION CE

CONTACT commercial@serem-electronics.com