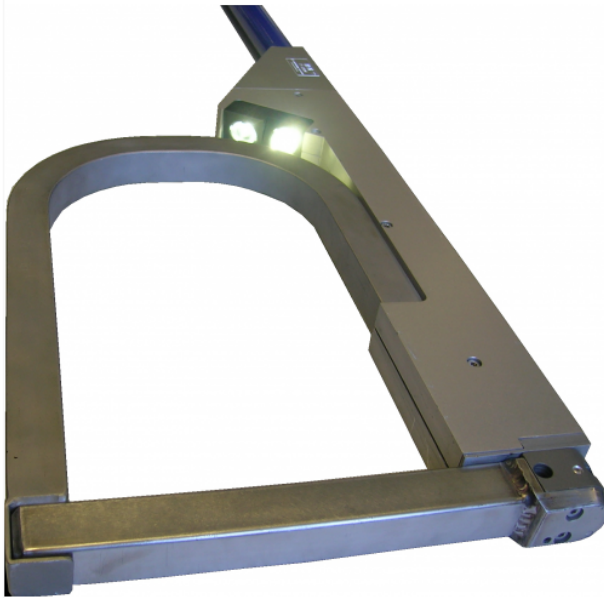


PAR

AMMETRIC CLAMP



DESCRIPTION

The PAR ammeter clamp was specially developed for the aluminum industry to control the cathodic distribution on the electrolysis cells, or anodic around the anode. Associated with an EDP-FLUX (data logging fluxmeter) from Serem Electronics, it allows to measure direct currents up to 40KA.

Its square or round shape, its length and its small thickness allow measurements to be taken on cathode conduction bars, over the tank floor and through gratings or around the anode without getting tired.

The ROTATIONAL shape is the LIGHTEST with only 25mm of thickness for a weight of 4.7kg



FEATURES

CONFIGURATION

- Spare part : Handle for ROUND PAR
 - Spare part : Handle for SQUARE PAR
 - Rot. : Rectangular shape. Rotational opening at the bottom.
ULTRA LIGHT : 4.7kg / Thickness 25mm
Internal dimensions 123x190mm adapted for bus bar 100x140mm (width x height)
 - Rot. : Rectangular shape. Rotational opening at the bottom.
ULTRA LIGHT : 4.7kg / Thickness 25mm
Internal dimensions 123x264mm adapted for bus bar 100x214mm
 - Square : Internal dimensions length 170mm, height 190mm
 - Rot. : Rectangular shape. Rotational opening at the bottom.
ULTRA LIGHT : 4.7kg / Thickness 25mm
Internal dimensions 173x200mm adapted for bus bar 150x150mm
 - Rot. : Rectangular shape. Rotational opening at the bottom.
ULTRA LIGHT : 4.7kg / Thickness 25mm
U Internal dimensions 173x250mm adapted for bus bar 150x200mm
 - Rot. : Rectangular shape. Rotational opening at the bottom.
ULTRA LIGHT : 4.7kg / Thickness 25mm
U Internal dimensions 173x380mm adapted for bus bar 150x330mm
 - Round : Internal diameter of the tore 190-244mm, opening gap 200mm
 - Round : Internal diameter of the tore 207-261mm, opening gap 217mm
 - Round : Internal diameter of the tore 220-275mm, opening gap 230mm
 - Round : Internal diameter of the tore 300-355mm, opening gap 310mm
 - Round : Internal diameter of the tore 350-405mm, opening gap 360mm
 - Rot. : Rectangular shape. Rotational opening at the bottom.
ULTRA LIGHT : 4.7kg / Thickness 25mm
Standard internal dim. $www = W + 23 - hhh = H + 50$ for bus bar WxH (mm).
Maximum standard dimensions 300x264mm maximum.
Special dimensions possible on request 500x500mm maximum (specific R&D).
 - Square : with specific dimensions
- INPUT 2 - configuration**
- Standard length 2330mm
 - Specific length XXXXmm. Max 2500mm

PRICE On quote only

WEB LINK [Click here](#)

SECTOR ALUMINIUM CHLOR ALKALI
ELECTROLYSIS
USAGE ALUMINIUM MAINTENANCE |
ALUMINIUM PROCESS

WEIGHT 4.7 kilogramme

LENGTH 2330 mm

WIDTH 250 mm

HEIGHT 25 mm

CUSTOMS CODE 90 30 90 00

C. OF ORIGIN France

GUARANTEE 1 year

CERTIFICATION CE

CONTACT commercial@serem-electronics.com

PAR

AMMETRIC CLAMP



GALVANIC ISOLATION

- > 2000 Vrms

ACCURACY

- +-2% + fluxmeter accuracy

TEMPERATURE RANGE

- -25 to 100°C. Temporary use max. temperature : 300°C

MAGNETIC FIELDS

- Magnetic fields resistant for use in electrolysis pots.

CASING

- Aluminium body. Handles made out of polyamide.
- Lamps for measurement area.
Tube diameter 33mm.